



Strongwill Ultra-Power Battery Technology

Zinc-Silver Oxide/Manganese Dioxide Battery

VER:

DATE:

1.5V

Zinc-Silver Oxide/ Manganese Coin type Battery

Specification

28mAh

Model: SR59

Prepared By/Date	Checked By/Date	Approved By/Date

Important Notice

These data sheets contain information specific to batteries manufactured at the time of its publication.

Content herein do not constitute a warranty.

Copyright @ Strongwill Ultra-Power Battery Technology .All rights reserved



Strongwill Ultra-Power Battery Technology

Zinc-Silver Oxide/Manganese Dioxide Battery

VER:

DATE:

PRODUCT SPECIFICATION

1. Applicability: This specification is applicable to **SR59** coin type zinc-silver oxide/manganese dioxide battery.

SPECIFICATION

1. Cross Reference :

IEC	JAPAN	Ray-O-Vac	U.S.A SWITZERLAND	GERMANY	H.K PRODUCTS
SR59	SR736W	RW411	396	V396	SG2

- 2. Chemical System :** Zinc-Silver Oxide-Manganese Dioxide
(Potassium Hydroxide Electrolyte)
- 3. Nominal Voltage :** 1.55V
28mAh (continuously discharge at 20±2℃ under 22k Ω load
to 0.9V end-point voltage)
- 4. Standard Capacity :**
- 5. Approximate Weight :** 0.47g
- 6. Dimensions & Structure :** Dimensions & structure of the cell are shown in the attached Fig. 1.
- 7. Terminal Materials :** Negative : Ni plated/Fe/Cu plated or gold plated steel
Positive : Ni plated steel



Strongwill Ultra-Power Battery Technology

Zinc-Silver Oxide/Manganese Dioxide Battery

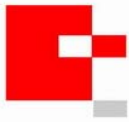
VER:

DATE:

8. Characteristics :

Characteristics of the cell are shown in the following table.

Items	Storage	Characteristics	Conditions
8.1 Electric Characteristics			
Open-Circuit Voltage	Initial	1.600V or higher	DC Voltmeter: The tolerance is ±0.005V and the input resistance is 1M Ω or more.
	After 12 months	1.550V or higher	
Closed-Circuit Voltage	Initial	1.560V or higher	DC Voltmeter : Same as above. Load Resistance : 22k Ω , 0.8Sec.
	After 12 months	1.540V or higher	
8.2 Service Output			
Service Life 22k Ω	Initial	490hrs or longer	Discharge Resistance : 22k Ω
Continuous Discharge	After 12 months	466hrs or longer	End-Point Voltage : 0.9V
8.3 Electrolyte Leakage Proof Characteristics			
Electrolyte leakage on overdischarge	There are no bulging or deformation of cells in excess of maximum dimensions shown in attached Fig. 1 by 0.2mm or more. There are no visible electrolyte leakage.		Temperature : 20±2°C Humidity : (65±20)%RH Load Resistance : 22k Ω Overdischarge Time : 48hrs (discharge after having reached specified end-point voltage)



Strongwill Ultra-Power Battery Technology

Zinc-Silver Oxide/Manganese Dioxide Battery

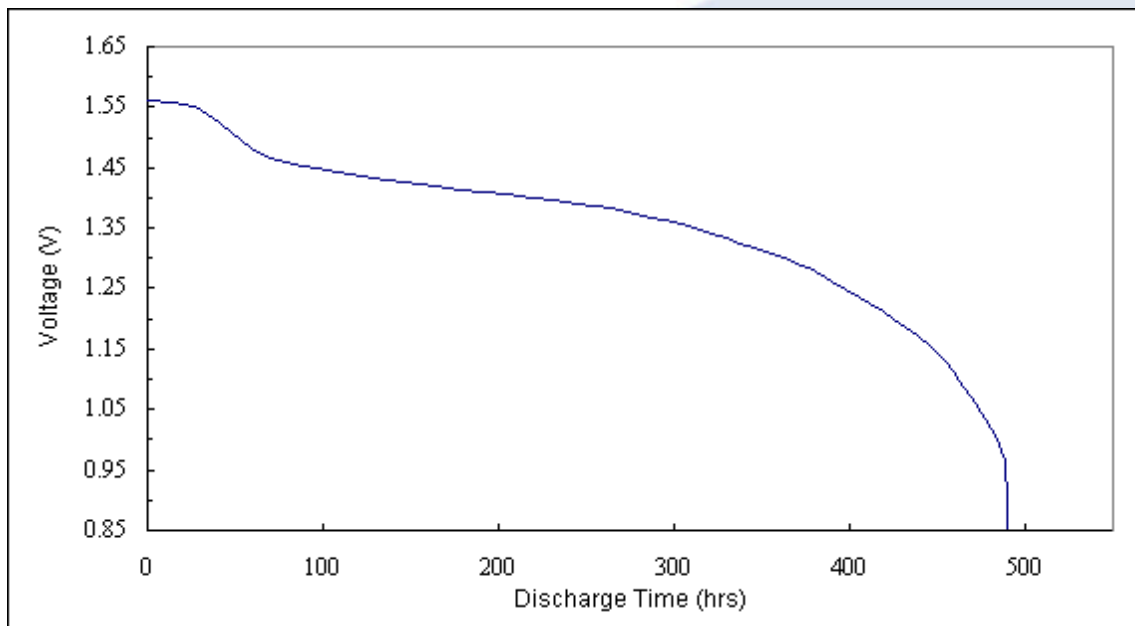
VER:

DATE:

9. Discharge Curve :

Load Resistance : 22k Ω

End-Point Voltage : 0.9V



10. Markings on Product :

- (1) Battery Type : SR726
- (2) Brand :
- (3) Polarity : "+" at the bottom ("--" not indicated)
- (4) Other specified markings

11. Caution for Use :

- (1) Since the button cell is not manufactured for recharging, there are risks of electrolyte leakage or causing damage to the device if the cell is charged.
- (2) The button cell shall be installed with its "+" and "--" sign according to the instruction shown on the applied device.
- (3) Short-circuiting, heating, disposing of in fire, or disassembling the button cell shall be prohibited.

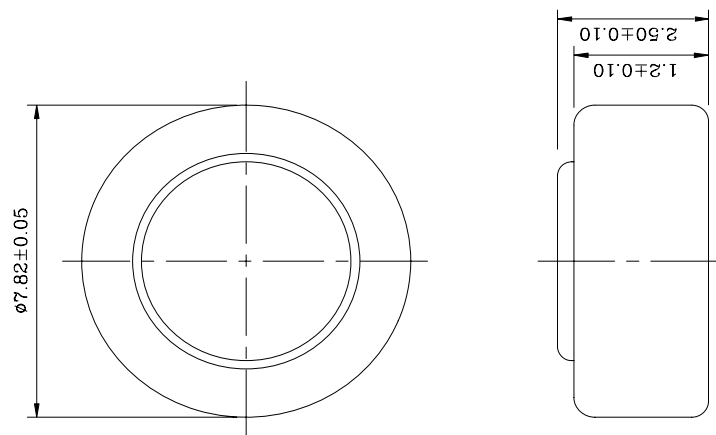
12. Warranty :

12 months shelf life after delivery.



SR726 DIMENSIONS & STRUCTURE

Dimensions (in mm) :



Structure :

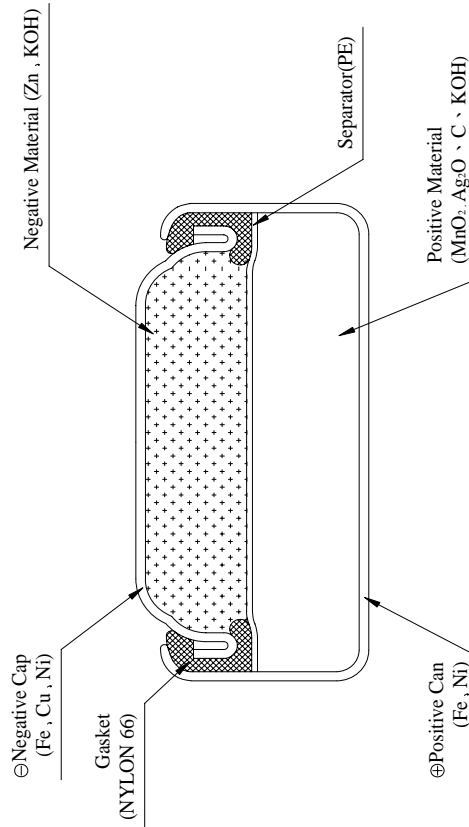


Fig. 1